



Francis Close, Ewell

The **PERSONAL** Agent

# Guide Price £625,000

## Freehold

- Well Appointed Detached House
- Private Driveway with Ample Parking
- Entrance Hall and D/s Cloakroom
- Lounge To Front
- Dining Room
- Conservatory End
- Extended Kitchen
- Three Double Bedrooms
- Modern Shower Room
- Level and Secluded Rear Garden

This attractive three double bedroom detached family home awaits its new owners. Boasting well appointed accommodation spread over approximately 1113 Sq. Ft, this fine property is conveniently located in a quiet cul-de-sac in the desirable area of Ewell Court.

Thoughtfully designed with a practical and flexible layout, this stylish home caters to the needs of day-to-day family life. Whether you're looking to entertain in the spacious reception rooms or relax in one of the well-appointed bedrooms, this property offers the perfect blank canvas for you to add your personal touch and create a space that truly reflects your style.

Don't miss the opportunity to make this fine family home yours and experience the harmonious blend of comfort, convenience, and potential it has to offer.



A large and welcoming entrance hall benefits from a handy downstairs cloakroom and provides access to a spacious living room, which opens onto a separate dining room with a lovely conservatory end, perfect for relaxing with views of and direct access to the garden. There is a fully fitted modern kitchen with ample worktop space and door which links directly to the rear garden.

On the first floor there are three well proportioned bedrooms and off the landing there is a modern family shower room. From the landing there is access to a large adaptable loft space which provides further scope for expansion, subject to planning permission.

Outside is nicely thought out with a large driveway and a side gate with access to a sunny and secluded level rear garden with a Indian sandstone paved terrace

seating area and lawn leading to a useful storage shed.

Francis Close is a quiet residential cul-de-sac that is equidistant to Ewell & Tolworth town centre and the green spaces of the Hogsmill Nature Reserve, with access to open fields by the footpath just around the corner making it the perfect balance between suburban and country living.

The property is also close to Tolworth mainline station (approx. 17 minute walk); there are regular services to London Waterloo. Nearby Ruxley Lane provides a selection of convenience stores and restaurants whilst Tolworth High Street has a larger variety of shops and Kingston upon Thames a greater choice still.

Tenure - Freehold  
Council tax band - E



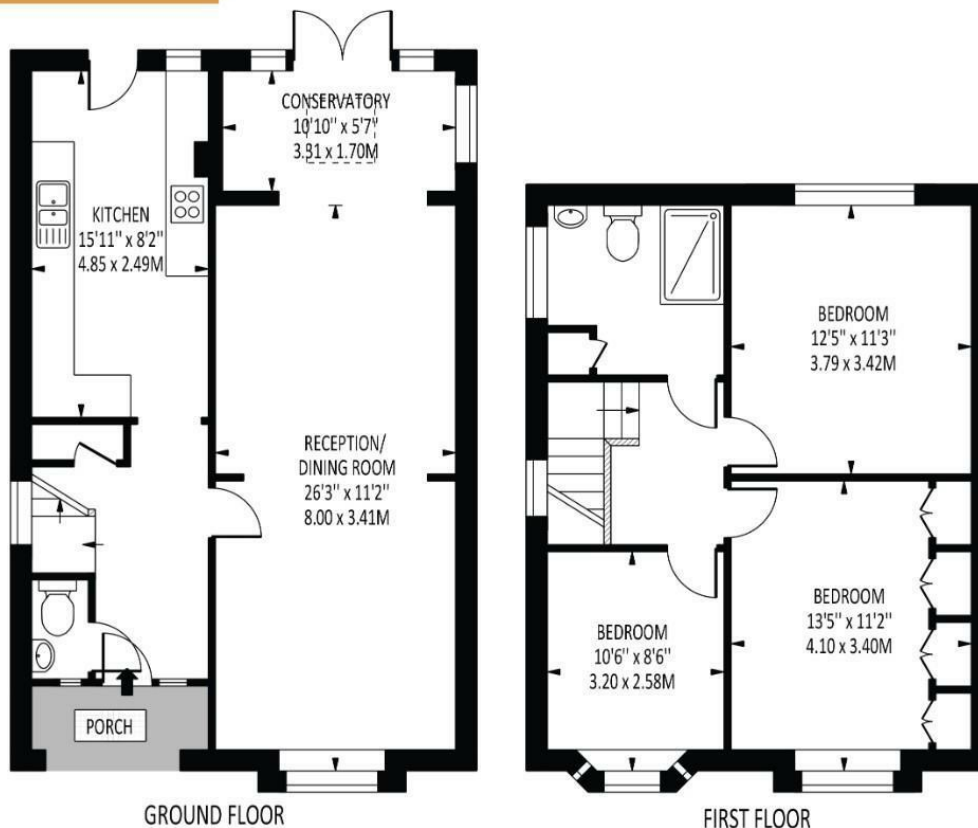


The **PERSONAL** Agent



Francis Close

Total Area: 1103 SQ FT • 102.49 SQ M



Disclaimer: For Illustration Purposes only

This floor plan should be used as a general outline for guidance only and does not constitute in whole or in part an offer of contract. Any intending purchaser or lessee should satisfy themselves by inspection, searches, enquiries and full survey as to the correctness of each statement. Any areas, measurements or distances quoted are approximate and should not be used to value a property or be the basis of any sale or let.

Energy Efficiency Rating		
	Current	Potential
Very energy efficient - lower running costs		
(92 plus) A		
(81-91) B		
(69-80) C		
(55-68) D		
(39-54) E		
(21-38) F		
(1-20) G		
Not energy efficient - higher running costs		
	47	76
England & Wales		
	EU Directive 2002/91/EC	

**EPSOM OFFICE**  
2 West Street  
Epsom, Surrey, KT18 7RG  
01372 745 850

**STONELEIGH/EWELL OFFICE**  
62 Stoneleigh Broadway  
Stoneleigh, Surrey, KT17 2HS  
020 8393 9411

**BANSTEAD OFFICE**  
141 High Street  
Banstead, Surrey, SM7 2NS  
01737 333 699

**TADWORTH OFFICE**  
Station Approach Road  
Tadworth, Surrey, KT20 5AG  
01737 814 900

**LETTINGS & MANAGEMENT**  
157 High Street  
Epsom, Surrey KT19 8EW  
01372 726 666

The  
**PERSONAL**  
Agent

The Personal Agent Ltd. Registered office: 2A Boston Rd, Henley-on-Thames RG9 1DY.  
Registered in England No. 4398817.



**Please Note:** Whilst every attempt has been made to ensure the accuracy of the floorplans contained here, measurements of doors, windows and room areas are approximate and no responsibility is taken for any error, omission or mis-statement. These plans are for representation purposes only and should be used as such by and prospective purchaser. The services, systems and appliances listed in the specification have not been tested by The Personal Agent and no guarantee as to their operating ability or their efficiency can be given. All images and text used to advertise our properties are for the sole use of The Personal Agent Ltd.

